

CAST IN-SITU RC SLAB
BEARING ONTO
THE POLARWALL
CONCRETE CORE

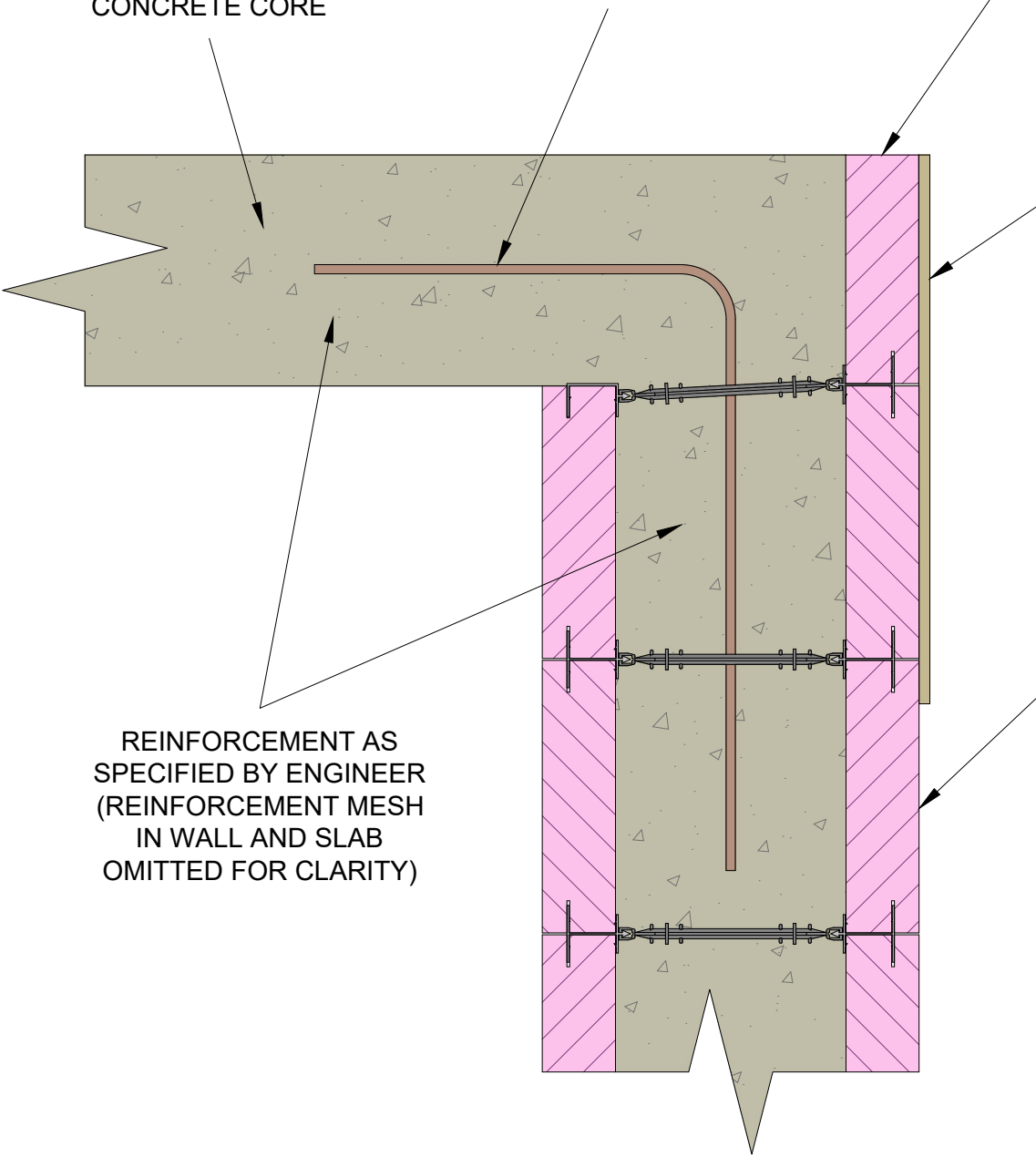
BARS CAST INTO
WALL TO TIE INTO
SLAB AT A FURTHER
STAGE

BOARDS CUT TO
HEIGHT OF SLAB

PLYWOOD SCREWED TO
RAILS TO SUPPORT EDGE
OF FORMWORK WHEN
POURING SLAB

POLARWALL PERMANENT
INSULATED FORMWORK
WITH 250mm RC CORE

REINFORCEMENT AS
SPECIFIED BY ENGINEER
(REINFORCEMENT MESH
IN WALL AND SLAB
OMITTED FOR CLARITY)



polarwall

4, EXE UNITS
COFTON ROAD
MARSH BARTON
EXETER
EX2 8QW

TELEPHONE 01392 823300

WWW.POLARWALL.CO.UK

TITLE

CAST IN-SITU SLAB WALL JUNCTION
DETAIL

THIS DRAWING AND THE INFORMATION CONTAINED IN
IT IS © POLARWALL LIMITED 2020.

DRAWN
FWJ SIMPSON

CHECKED
A WHEELER

DATE
12/11/2020

REVISION
0

DRG. No.
C-011